



Ministerie van Volksgezondheid,
Welzijn en Sport

Monitor Wlz-gebruik

In- en uitstroom naar
leveringsvorm

2020 tm week 34

O.b.v. CBS gegevens 4 september 2020



Ministerie van Volksgezondheid,
Welzijn en Sport



Inhoud

1. Mutaties vanaf week 12
2. Cliënten met Wlz-zorg
3. VV-verblijf
4. VV-VPT
5. VV-MPT /combi MPT/pgb
6. VV-pgb (sec)
7. GHZ-verblijf
8. GHZ-VPT
9. GHZ-MPT /combi MPT/pgb
10. GHZ-pgb (sec)

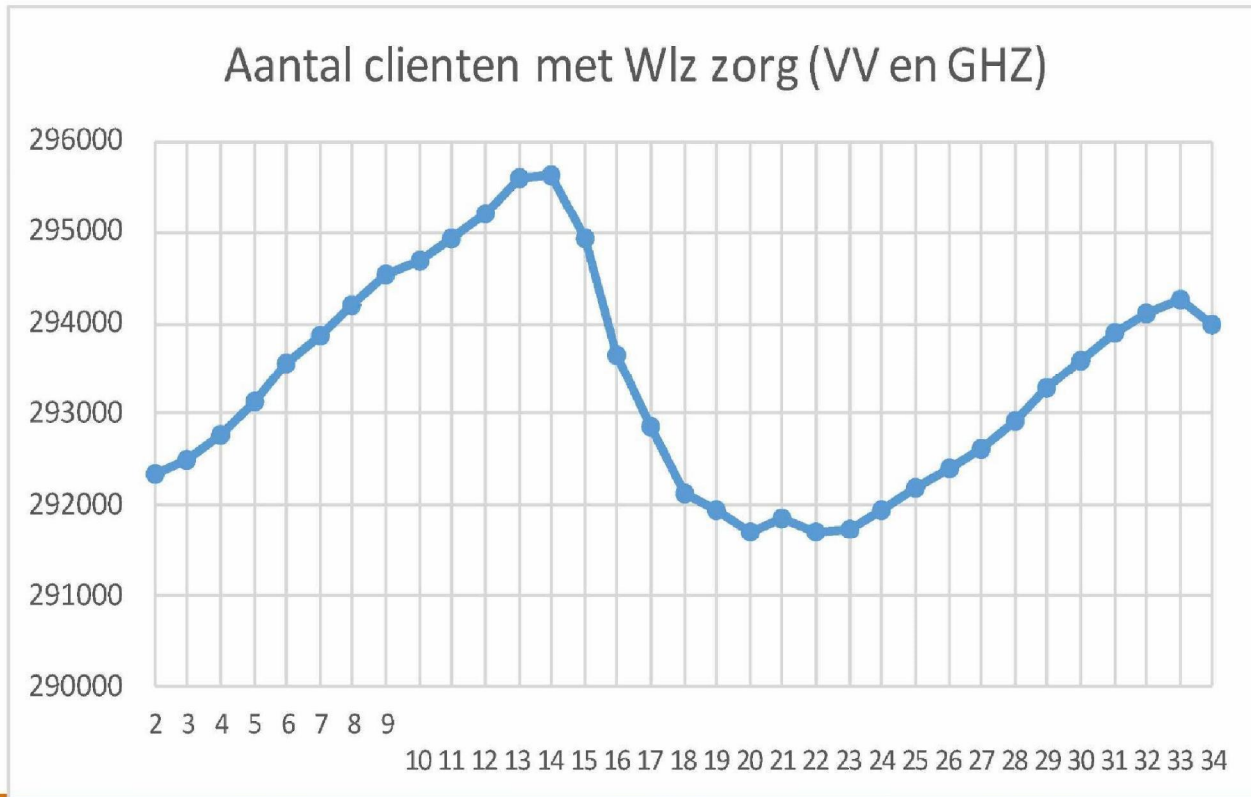
1. Mutaties vanaf week 12



(t.o.v. week 11)

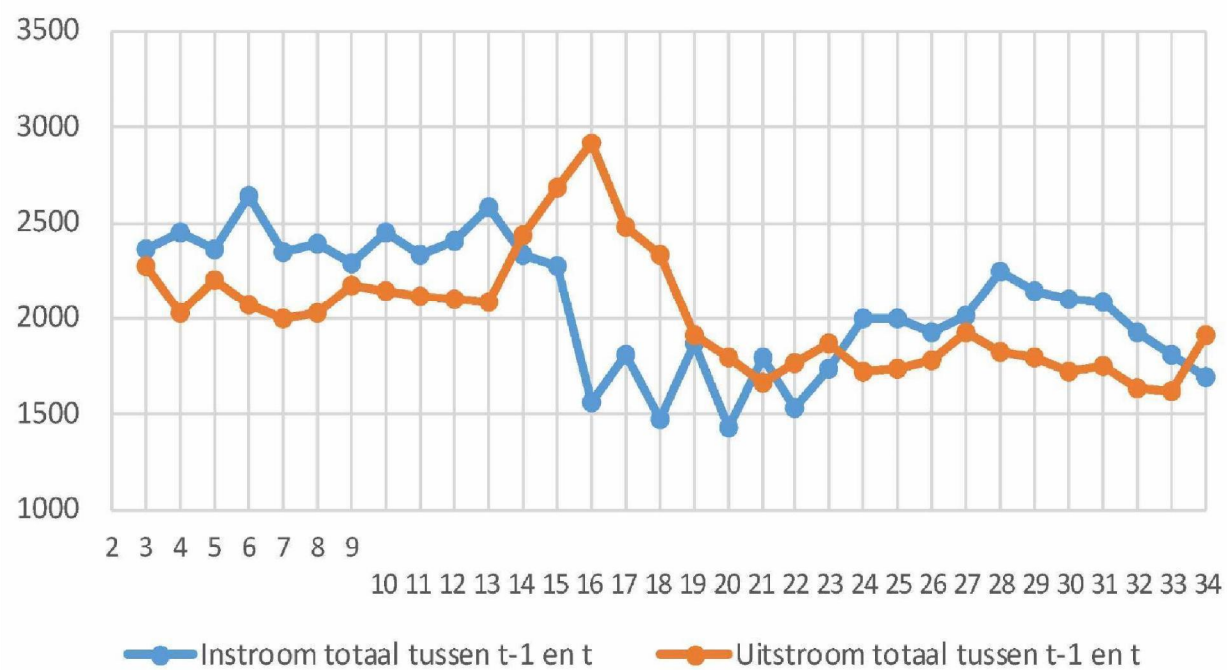
Week	Verpleging en verzorging				Gehandicaptenzorg				Totaal
	Verblijf	VPT	MPT	pgb sec	Verblijf	VPT	MPT	pgb sec	
12	15	50	145	0	15	12	12	12	6120
13	-45	15	335	35	-15	12	12	12	6120
14	-440	15	405	5	-45	0	50	20	10
15	-1.010	-5	315	-30	-35	12	12	12	-6120
16	-1.365	-60	190	-20	-60	0	50	-10	-1.275
17	-945	-15	105	0	-15	0	60	5	-805
18	-770	-20	85	-25	-15	12	12	12	-6120
19	-315	-25	65	-10	30	20	40	0	-195
20	-270	15	-20	-10	10	5	35	-10	-245
21	-5	10	100	-15	5	10	45	12	6120
22	-12	-12	-120	-20	0	0	30	-5	-150
23	0	-30	-25	-10	60	20	40	-25	30
24	325	10	-180	0	25	10	25	0	215
25	285	-5	-85	-10	25	5	20	0	235
26	300	-10	-110	-10	25	5	20	-10	210
27	345	-10	-115	-5	35	-5	0	-15	230
28	360	60	-170	-10	70	10	-10	-20	290
29	400	25	-70	-20	40	12	12	-12	6120
30	445	-10	-115	-30	45	-5	5	-25	310
31	370	-5	-55	-25	30	0	-5	-15	295
32	235	5	-25	-40	65	20	0	-55	205
33	240	20	-55	-35	20	0	5	-20	175
34	-170	15	-100	-40	10	5	5	-15	-290
week 12-34	-2.035	30	500	-325	325	100	580	-130	-955

2. Wlz-gebruik (VV en GHZ)

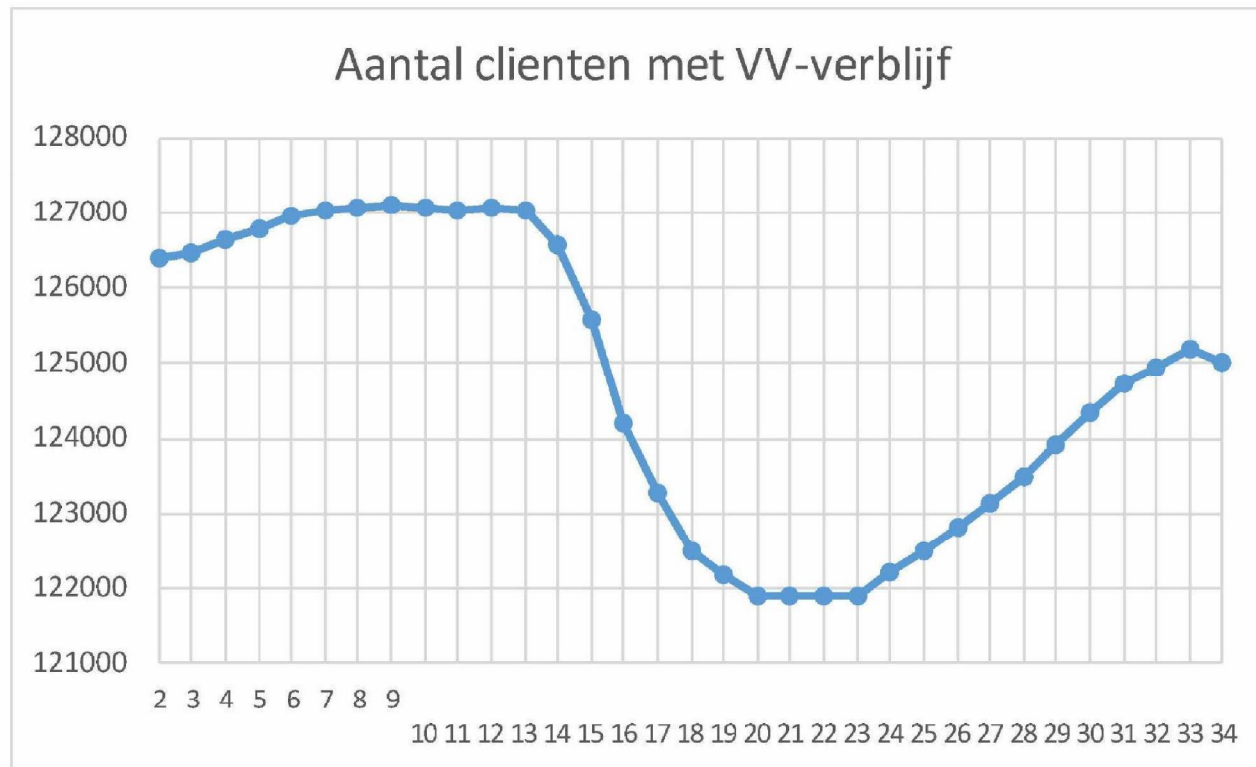


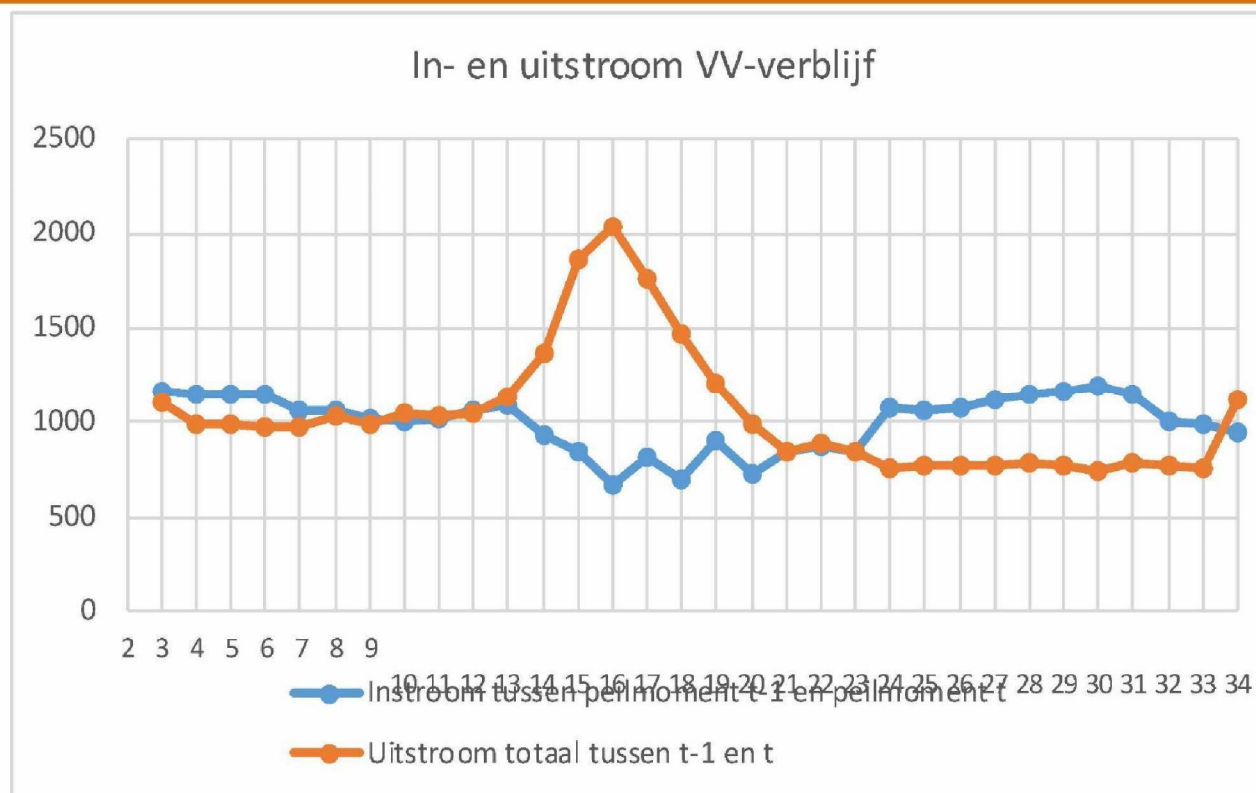


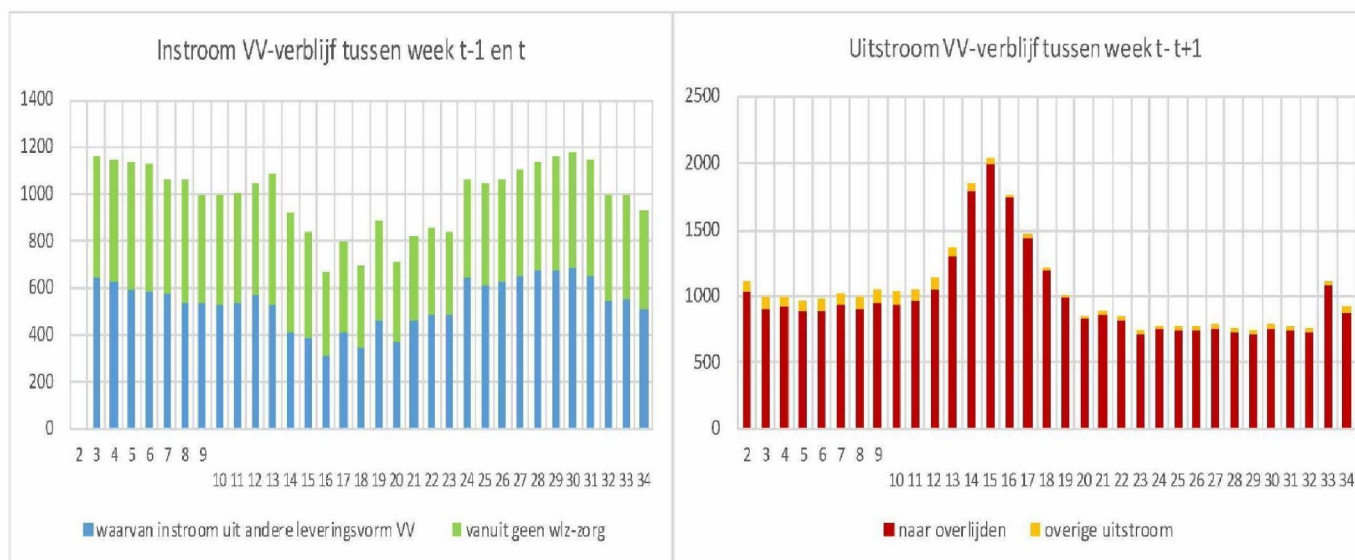
In- en uitstroom cliënten met Wlz-zorg



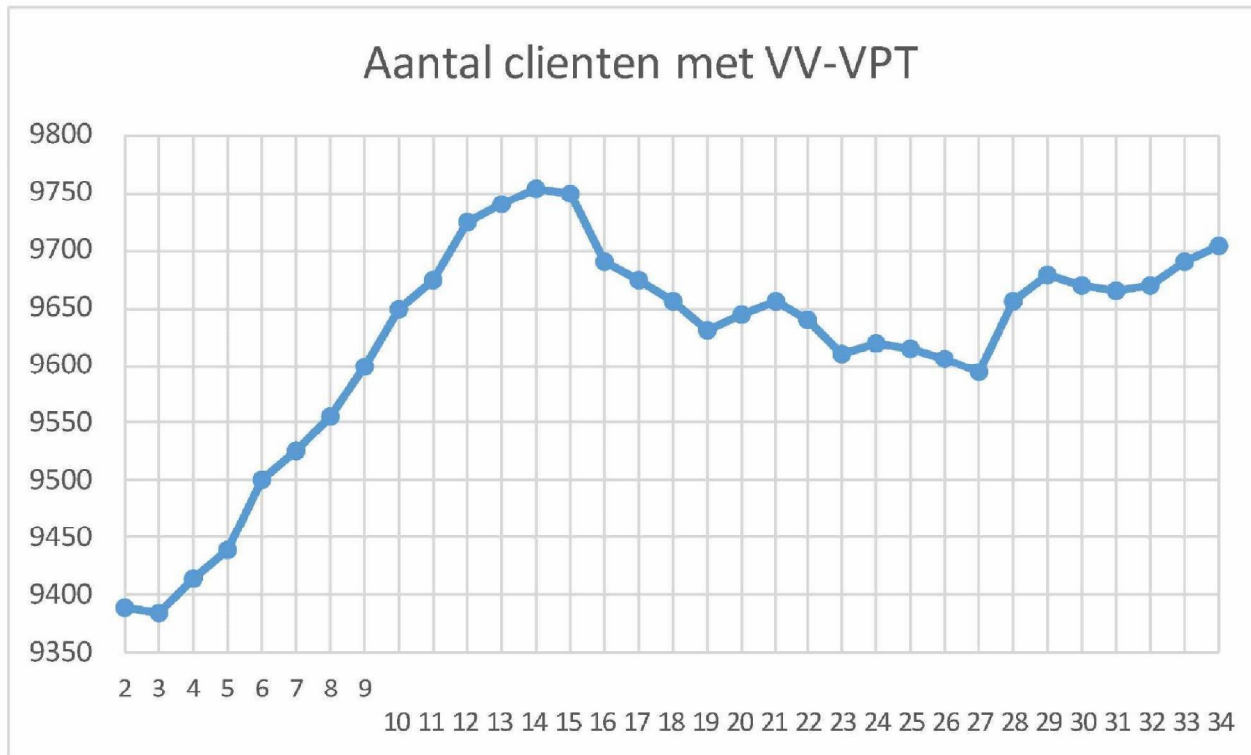
2. VV verblijf



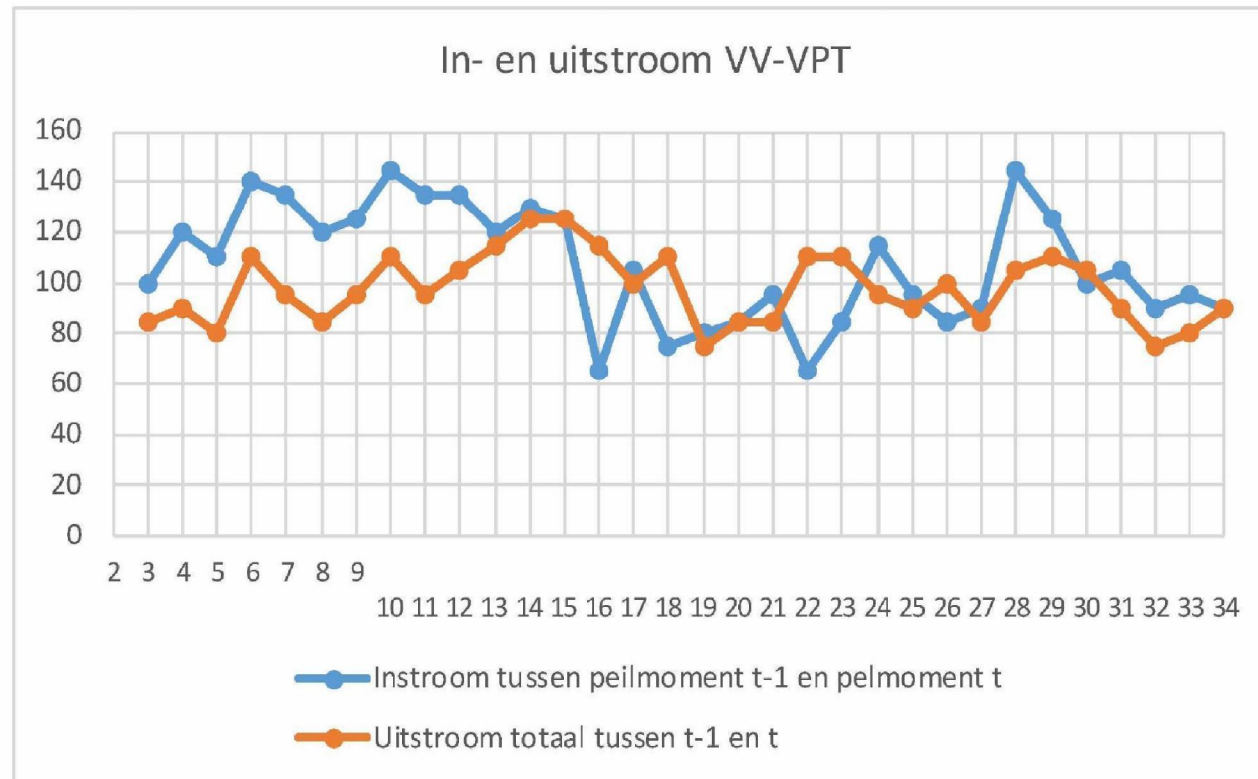




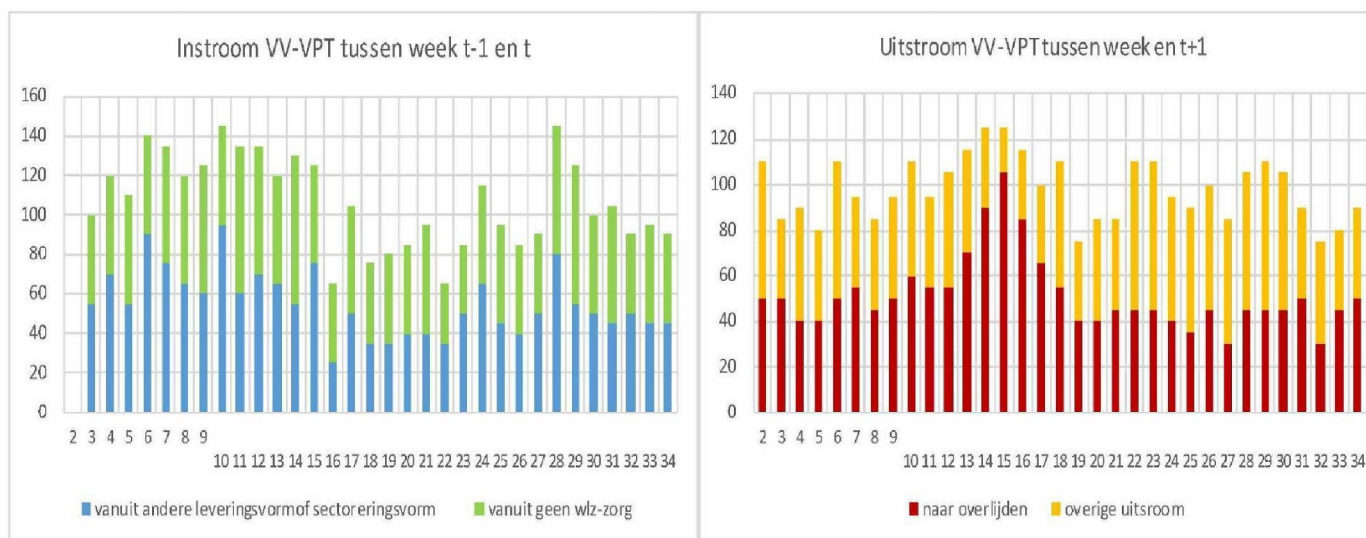
3. VV- Volledig Pakket toelagis (VPT)



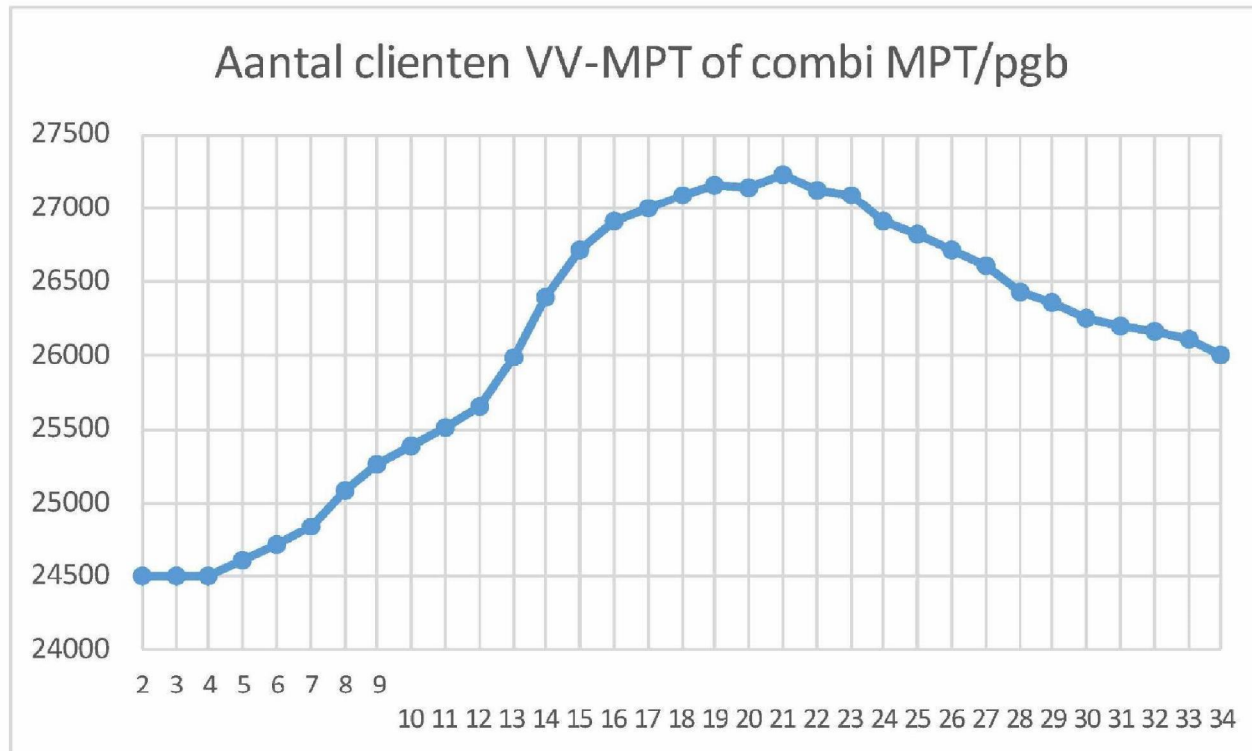
VV VPT in- en uitstroom



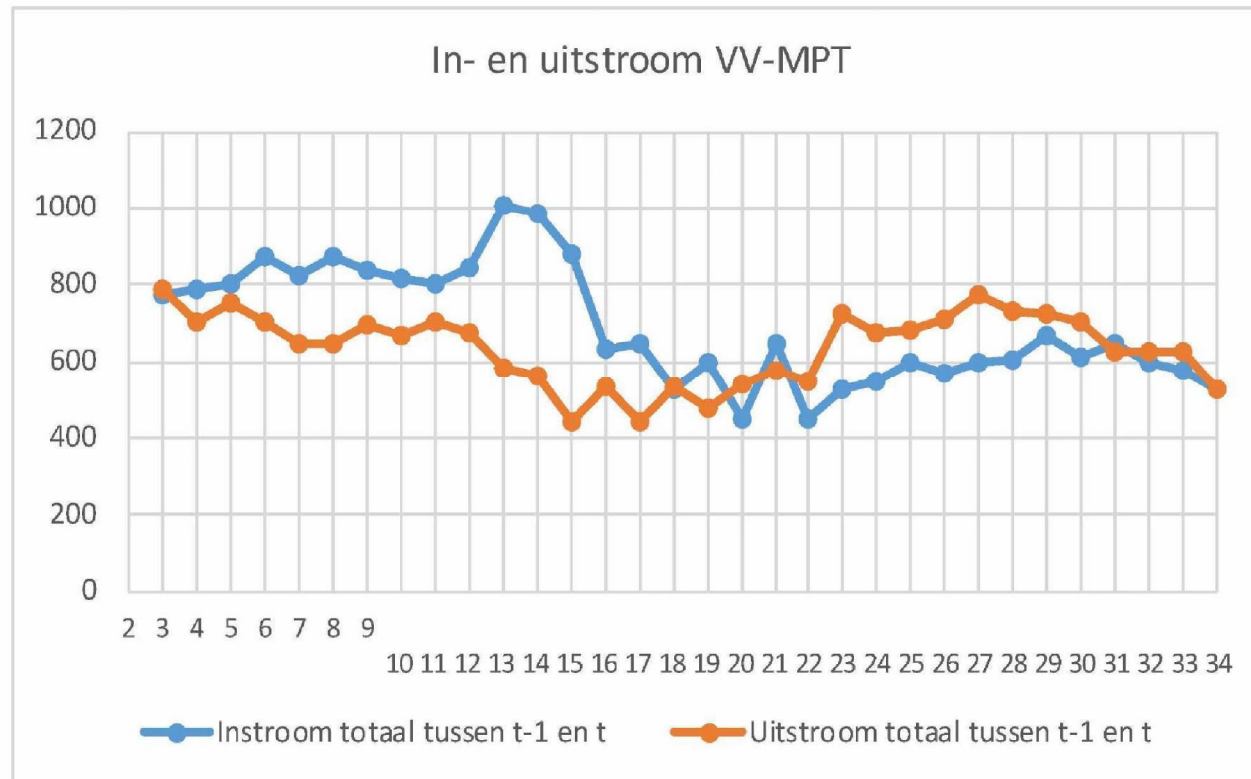
VV VPT in- en uitstroom



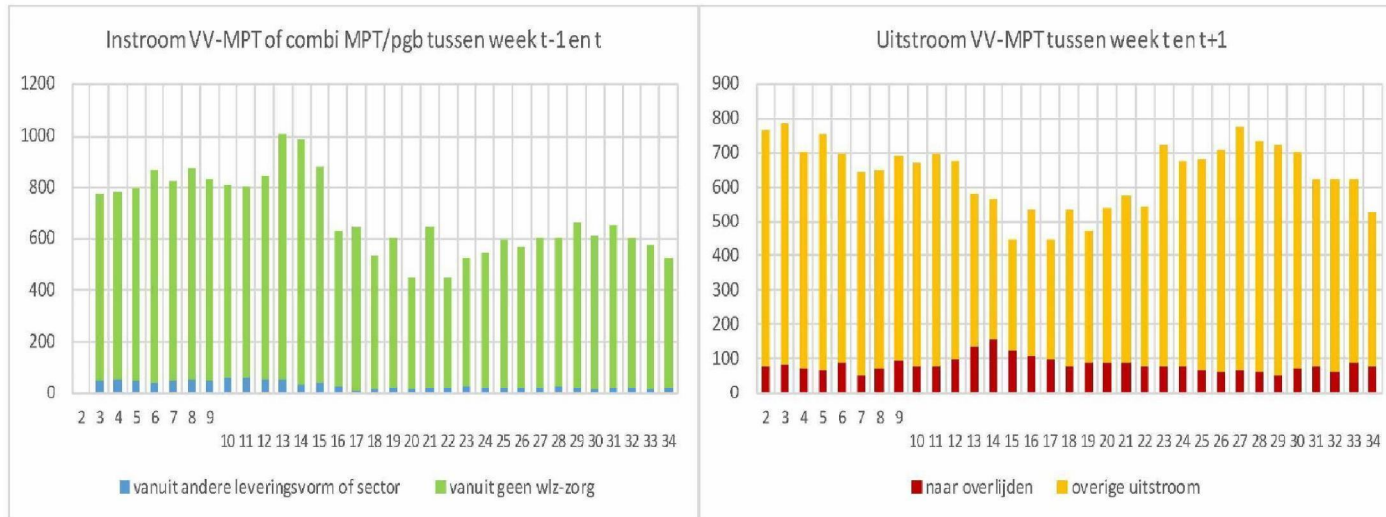
4. VV Modulair Pakket of combi MPT/pgb



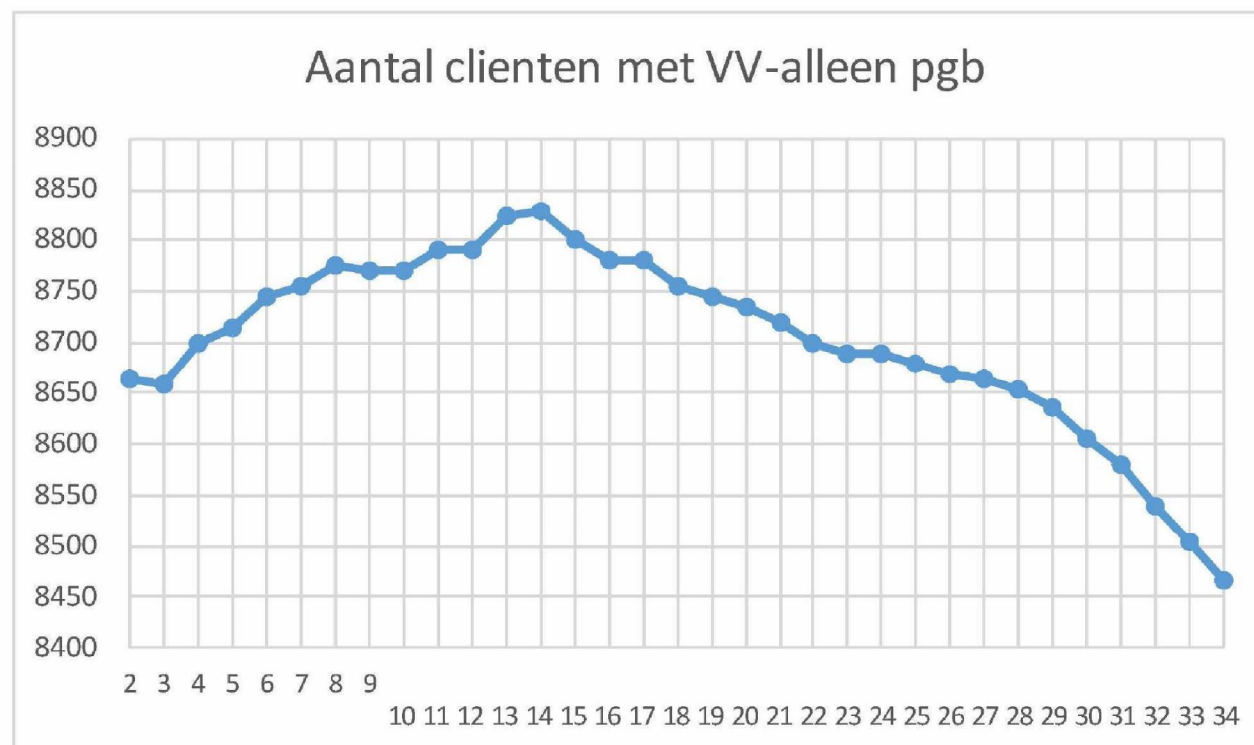
VV MPT in- en uitstroom



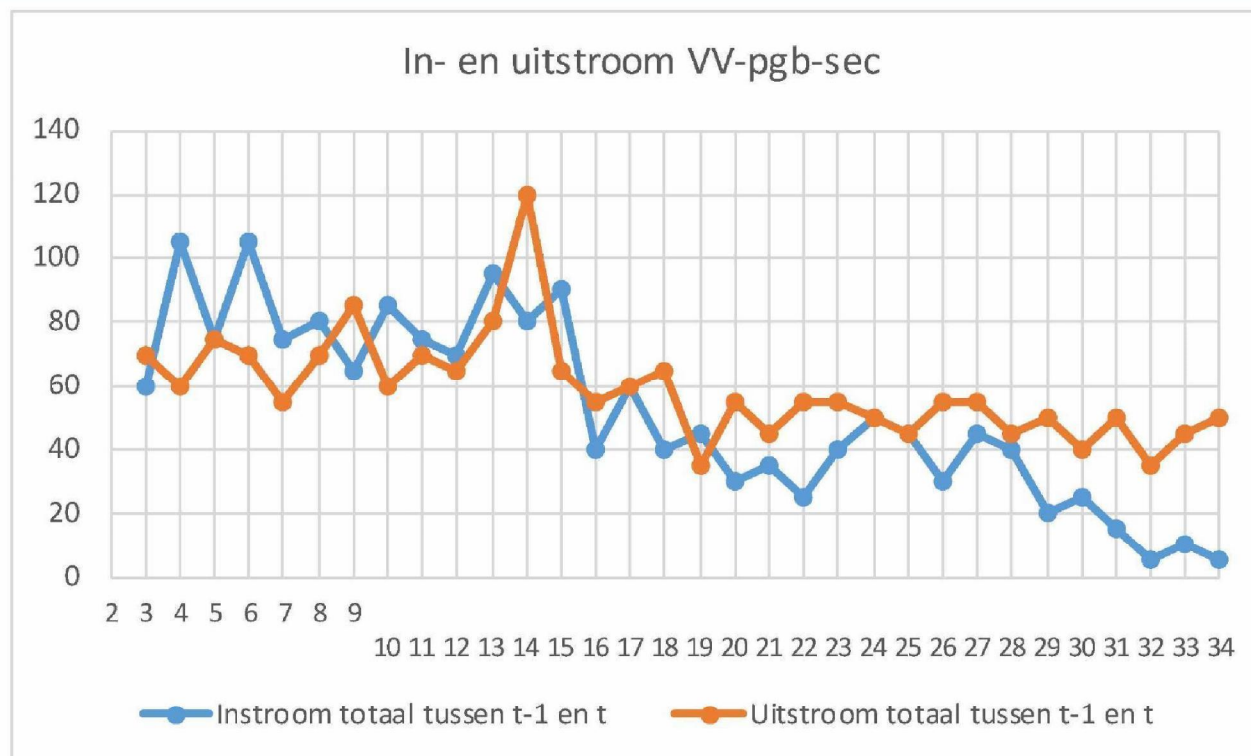
VV MPT in- en uitstroom



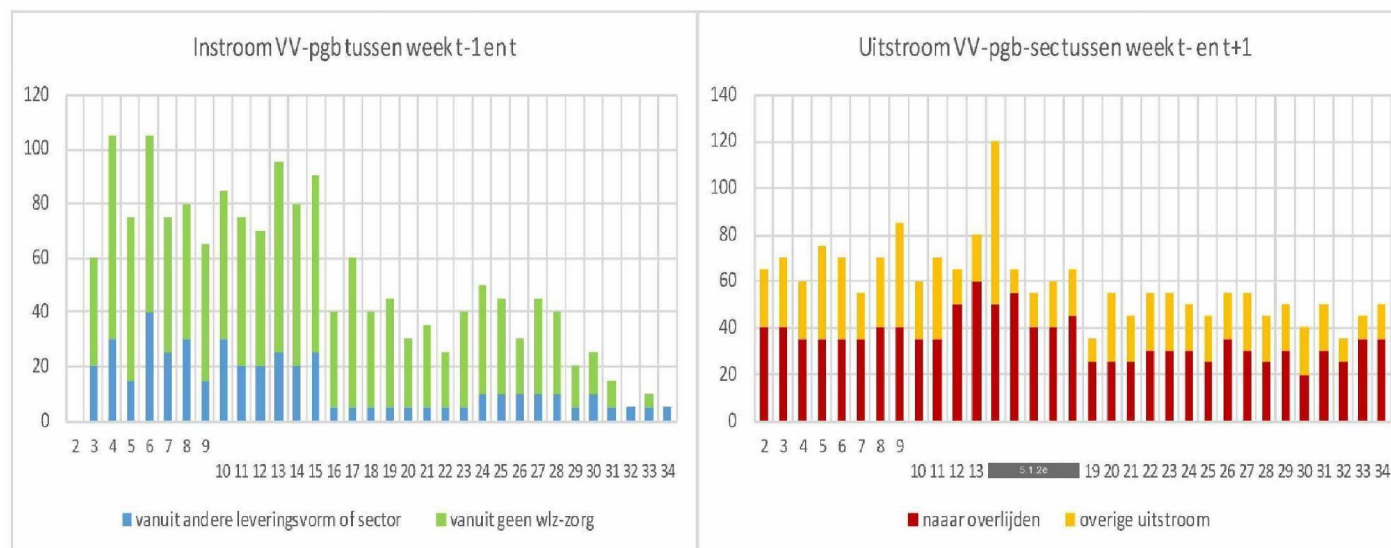
5. VV pgb-sec



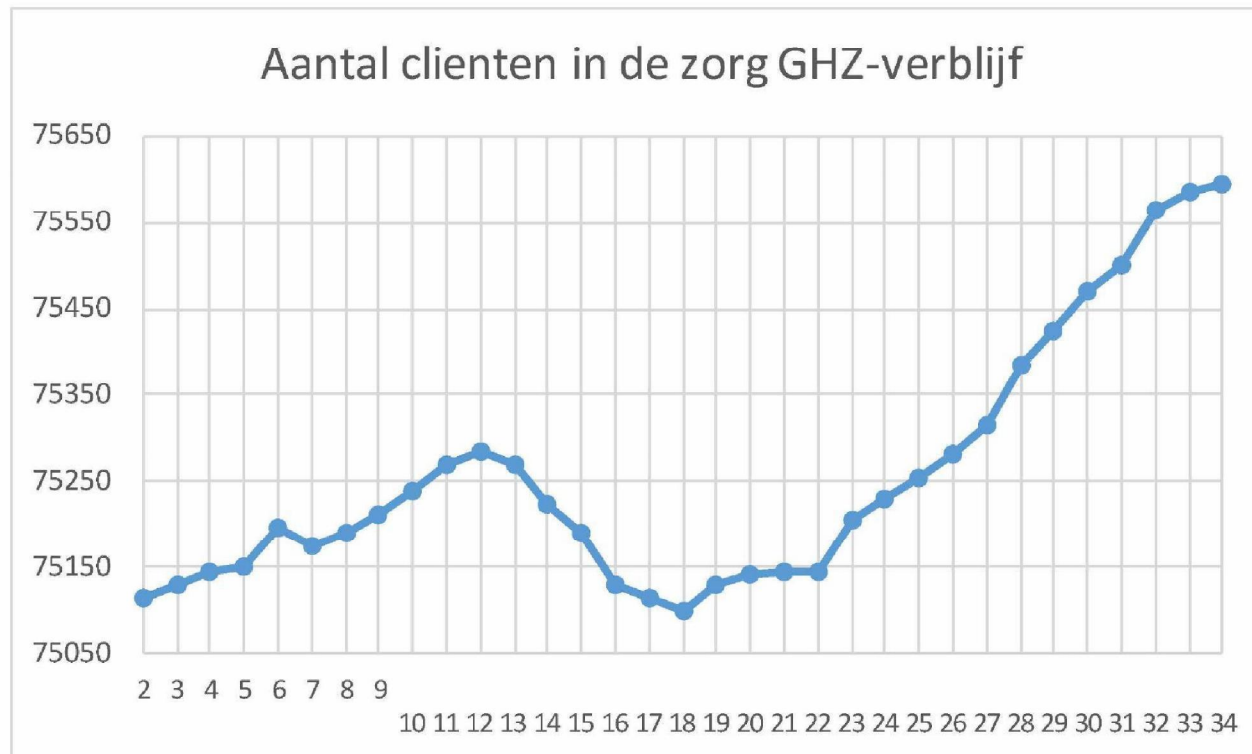
VV pgb-sec in- en uitstroom



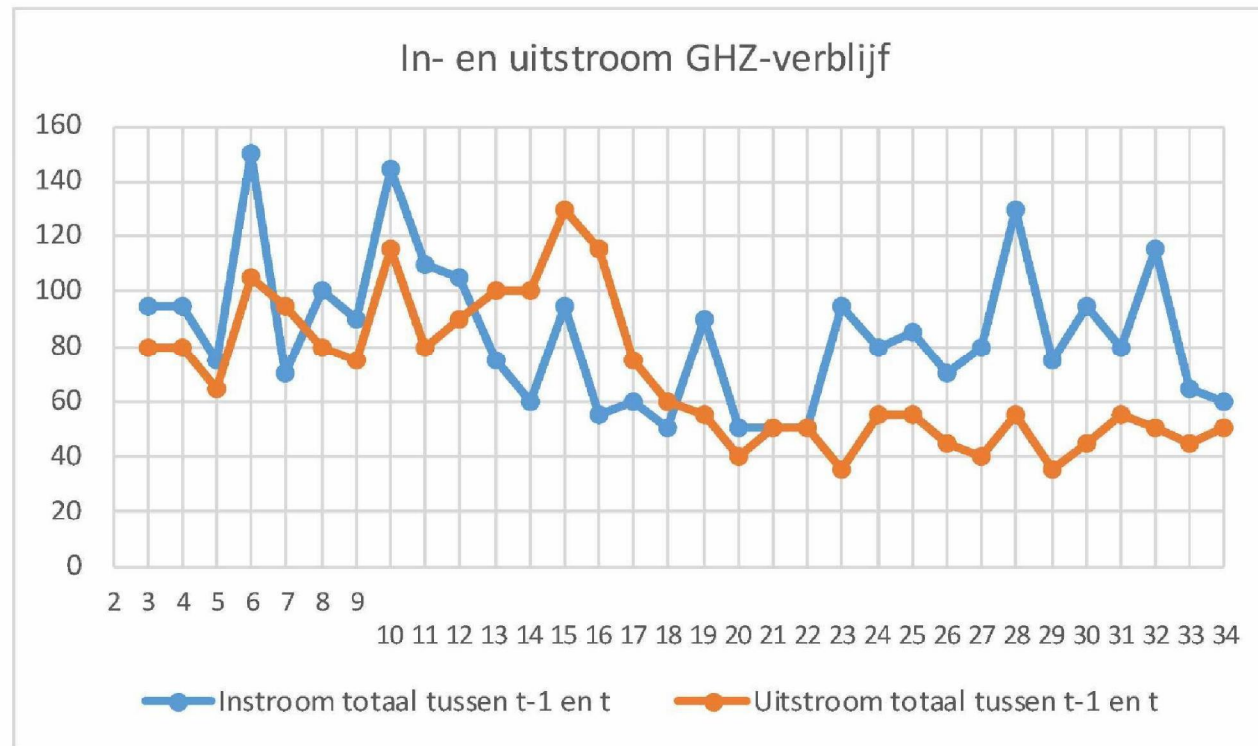
VV pgb-sec in- en uitstroom



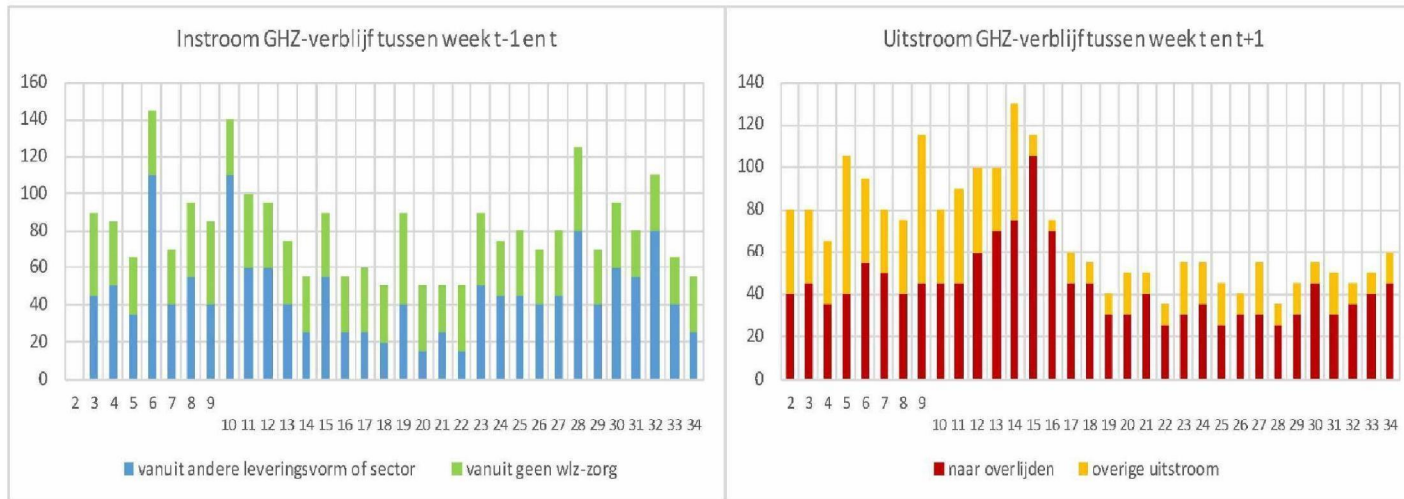
6. Gehandicaptenzorg verblijf



GHZ-verblijf in- en uitstroom



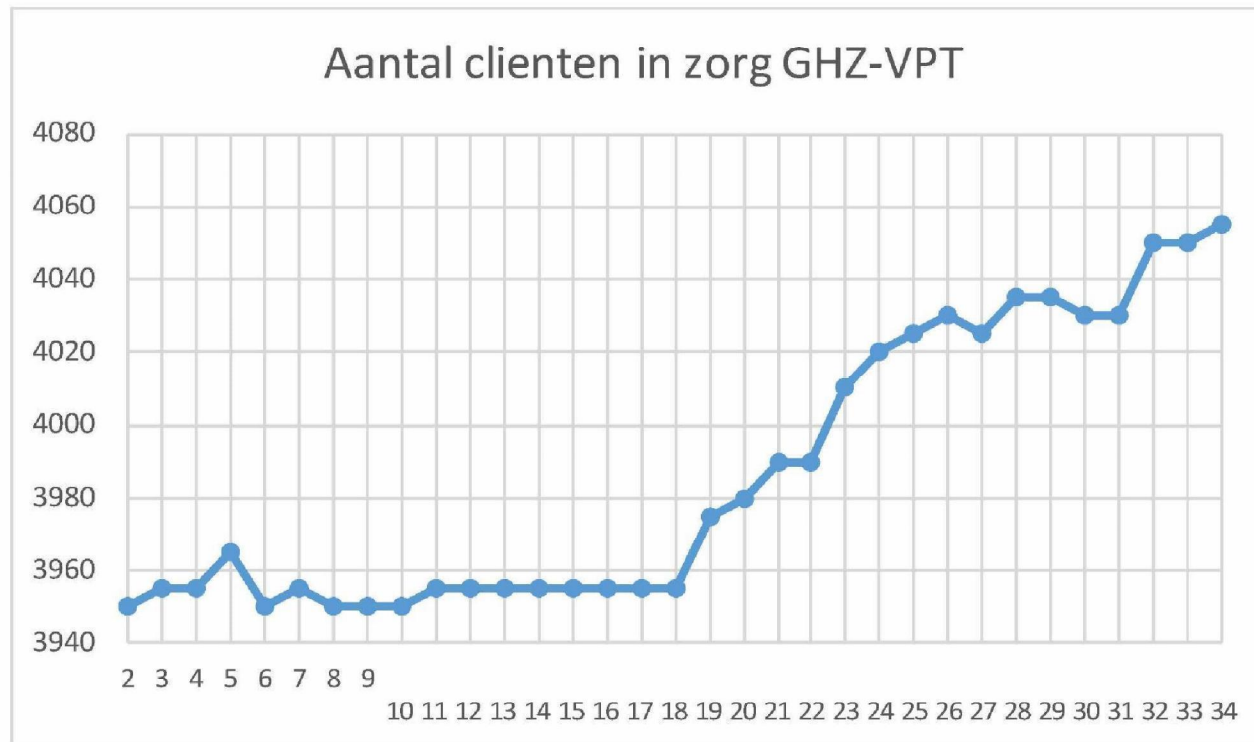
GHZ verblijf in- en uitstroom



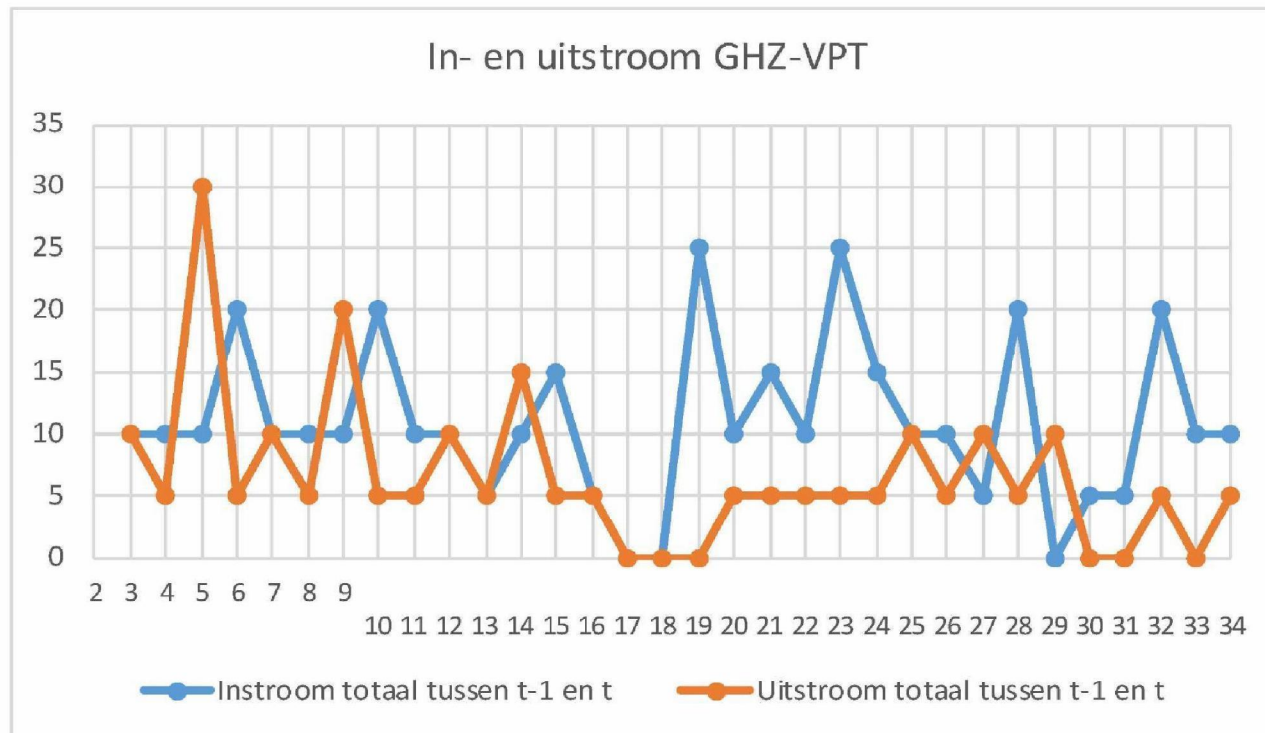
7. Gehandicaptenzorg



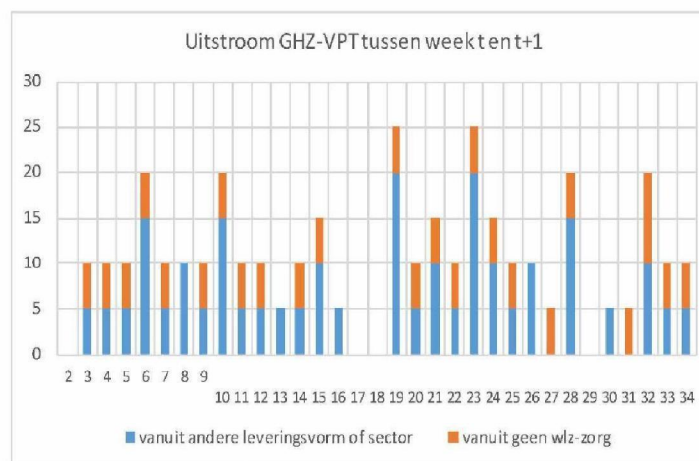
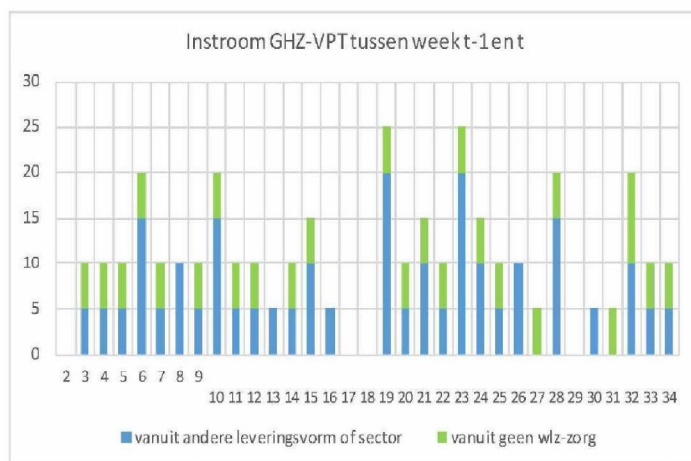
VPT



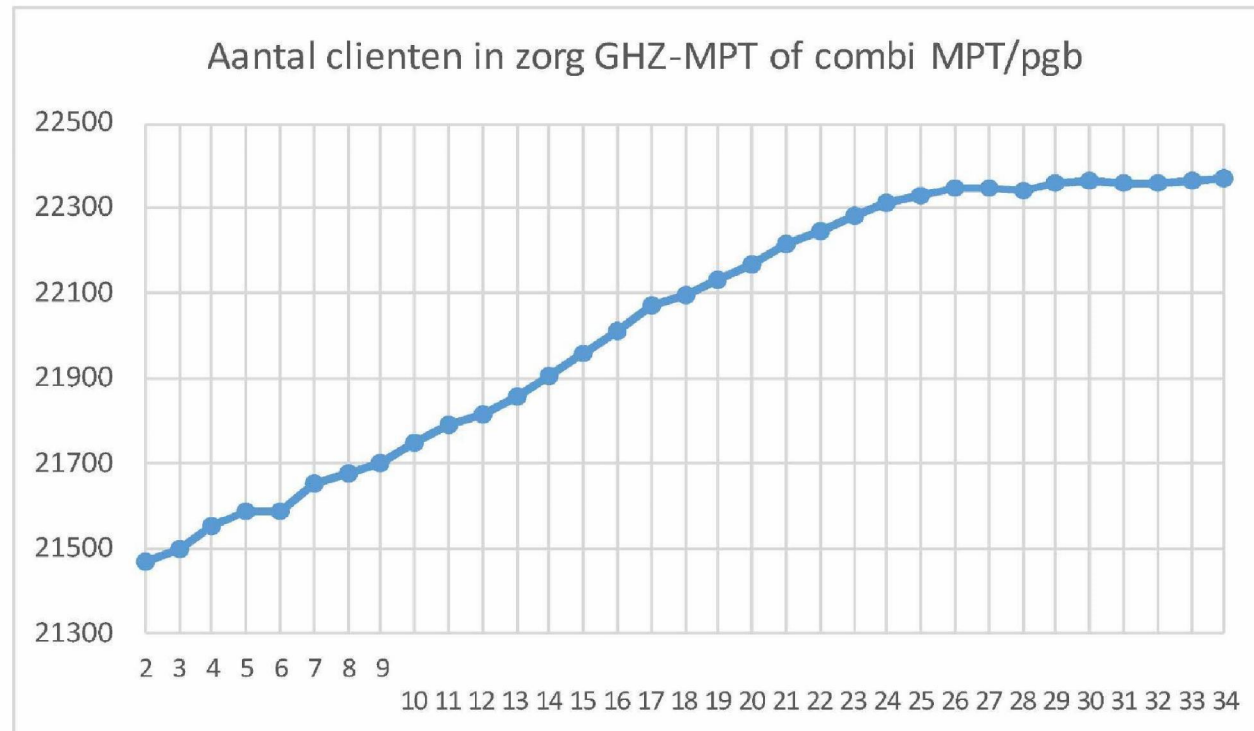
GHZ-VPT in- en uitstroom



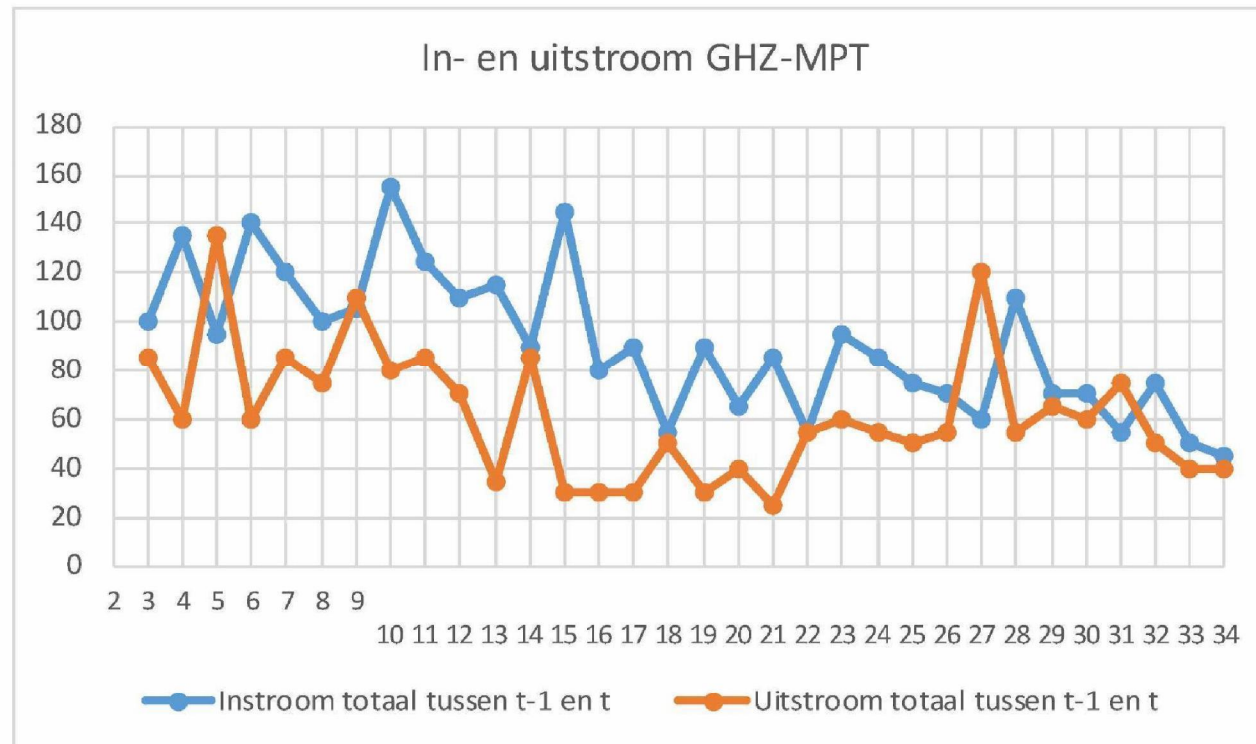
GHZ VPT in- en uitstroom



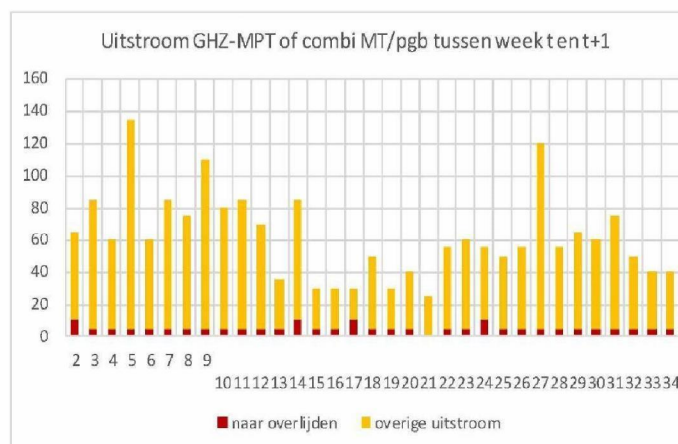
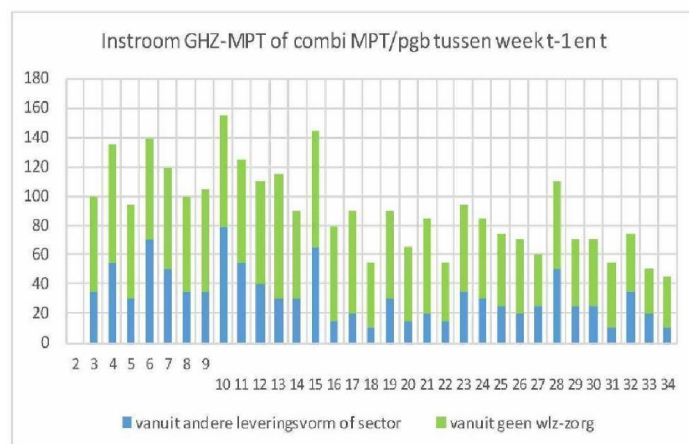
8. Gehandicaptenzorg MPT of combi MPT/pgb



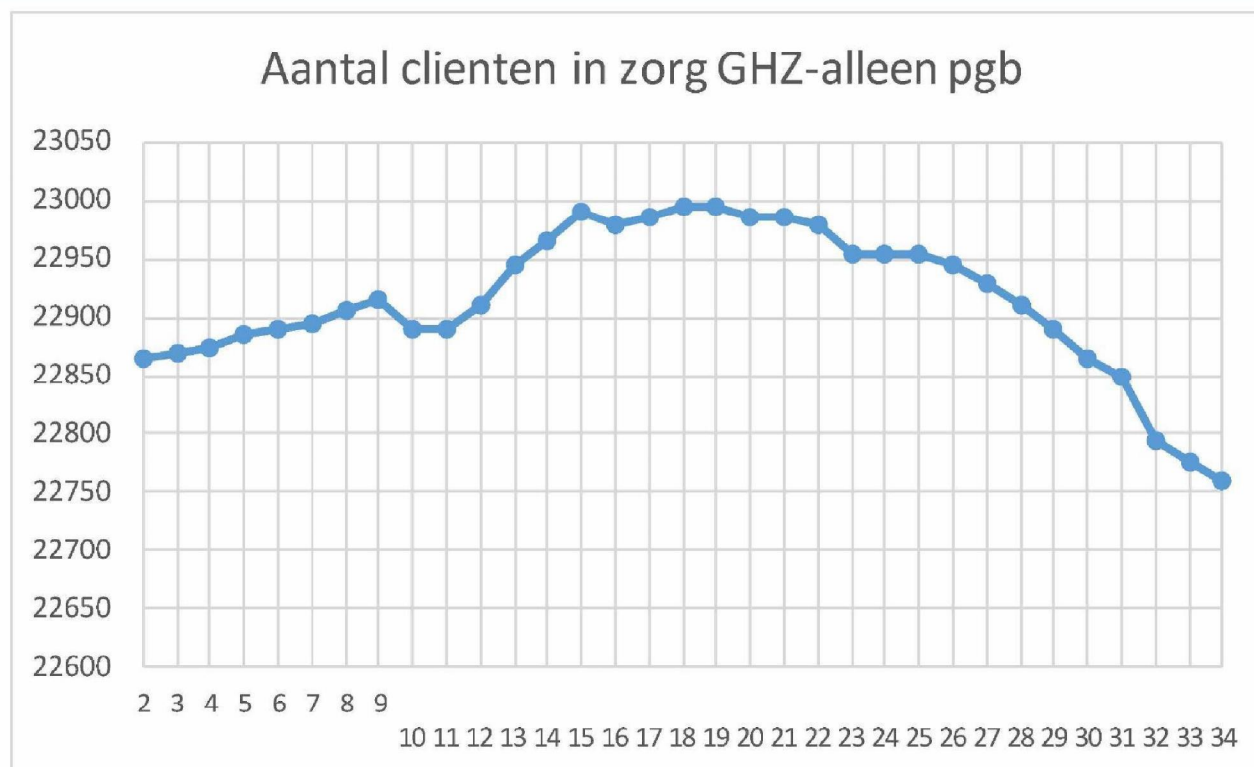
GHZ-MPT in- en uitstroom



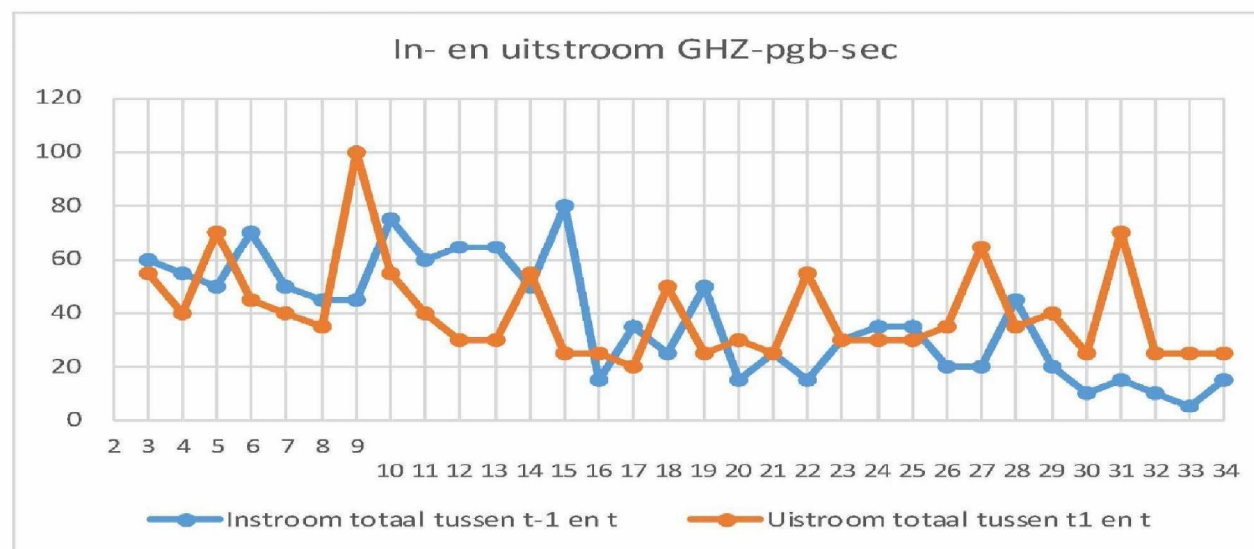
GHZ MPT in- en uitstroom



9. Gehandicaptenzorg – pgb sec



GHZ-pgb in- en uitstroom



GHZ pgb-sec in- en uitstroom

